

**2001-2005 Cancer Mortality Rates by County per 100,000 population
Age-Adjusted to the 2000 US Census**

<http://www.schs.state.nc.us/SCHS/CCR/mort0105cnty.pdf>

<http://www.scdhec.net/HS/epidata/reports/chronic%20conditions%20reports/2002/horry.pdf>

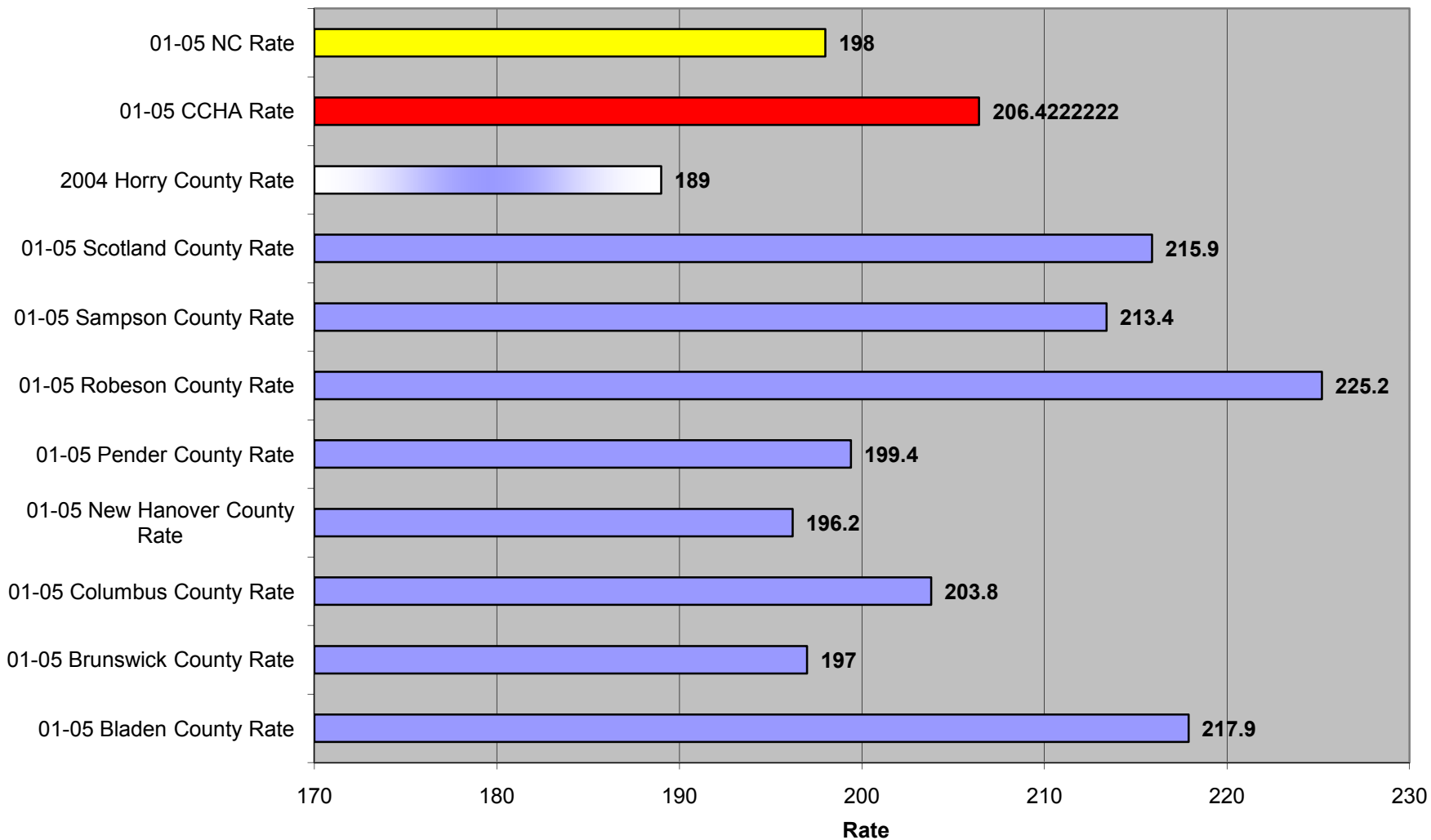
County	Deaths	Rate
01-05 Bladen County Rate	404	217.9
01-05 Brunswick County Rate	1061	197
01-05 Columbus County Rate	616	203.8
01-05 New Hanover County Rate	1737	196.2
01-05 Pender County Rate	487	199.4
01-05 Robeson County Rate	1205	225.2
01-05 Sampson County Rate	662	213.4
01-05 Scotland County Rate	377	215.9
2004 Horry County Rate	489	189
01-05 CCHA Rate	7038	206.4222
01-05 NC Rate	81428	198

South Carolina Cancer Death Rate 203.7 (2003)

North Carolina Cancer Death Rate 195.6 (2003)

<http://www.apps.nccd.cdc.gov/statecancerfacts>

2001-2005 Cancer Mortality Rates by County per 100,000 Population; Age-Adjusted to the 2000 US Census



**Age-Adjusted Death Rates for Specific Cancer Types for Total Population 2001-2005,
per 100,000 for CCHA Counties**

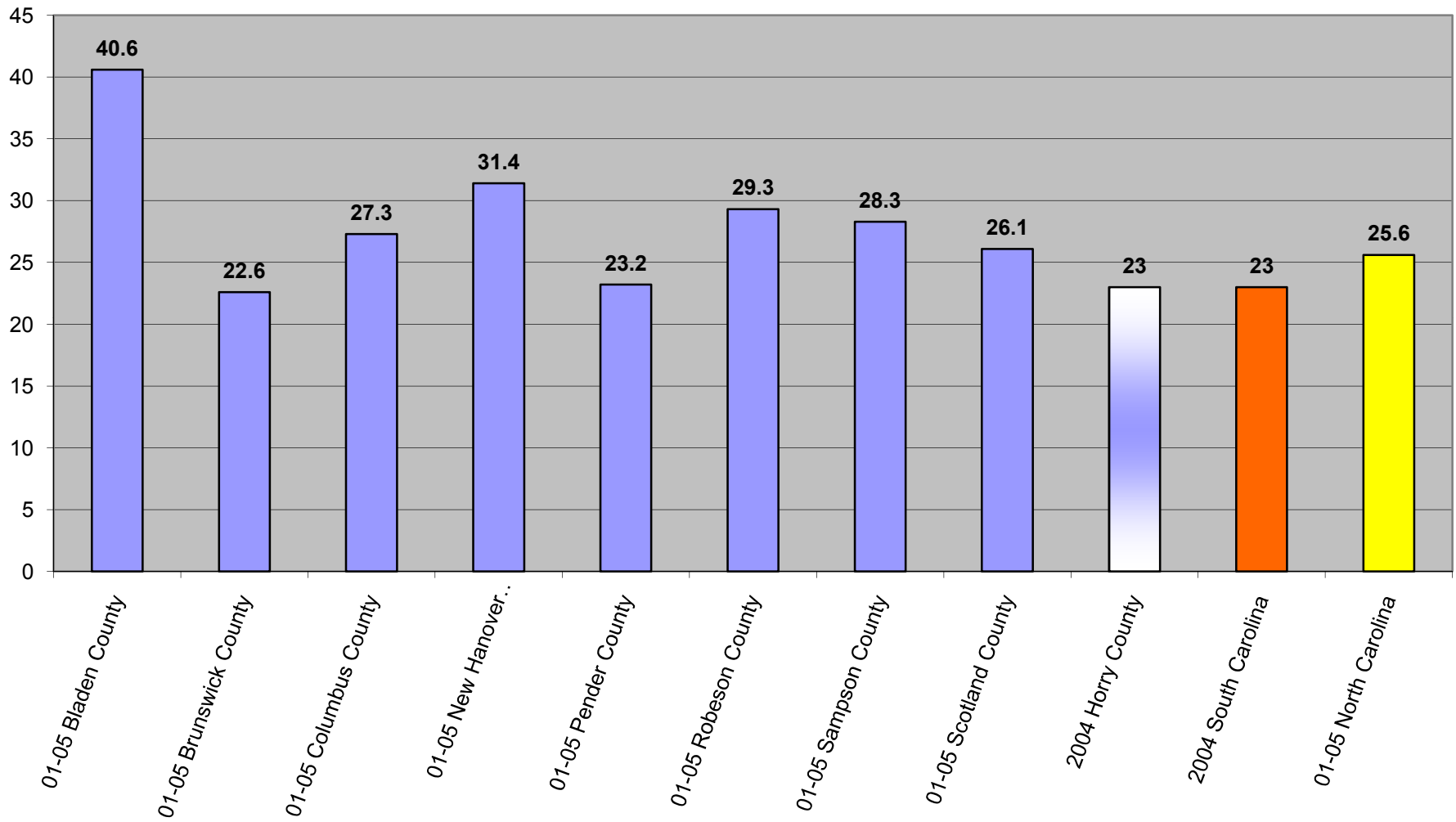
<http://www.schs.state.nc.us/SCHS/CCR/mort0105cnty.pdf>

<http://www.scdhec.net/HS/epidata/reports/chronic%20conditions%20reports/2002/horry.pdf>

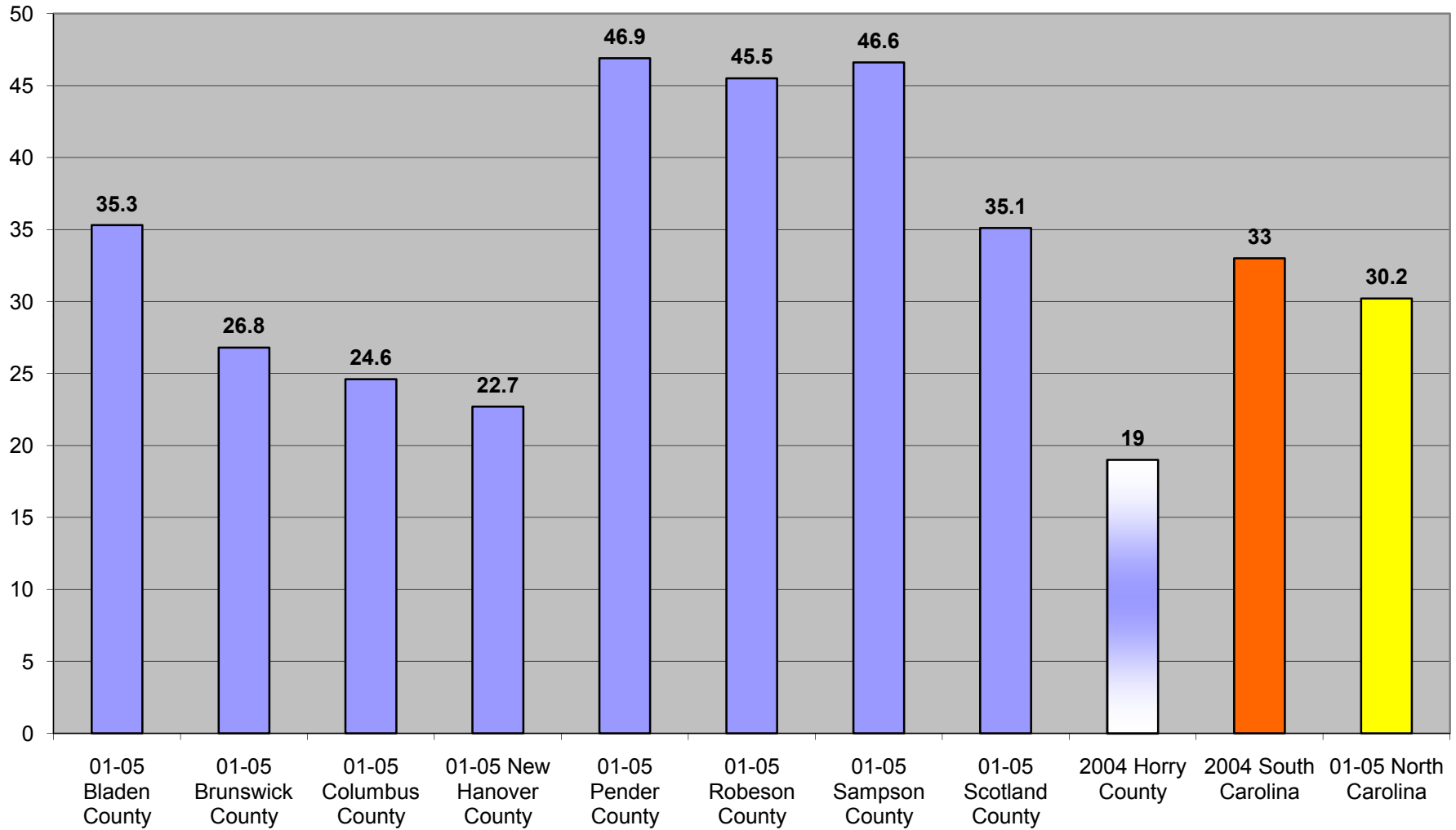
Colon/Rectum Cancer		Lung/Bronchus Cancer	
County	Rate	County	Rate
01-05 Bladen County	19.8	01-05 Bladen County	66
01-05 Brunswick County	18	01-05 Brunswick County	62
01-05 Columbus County	17.2	01-05 Columbus County	72.5
01-05 New Hanover County	16.8	01-05 New Hanover County	62
01-05 Pender County	15.9	01-05 Pender County	61.3
01-05 Robeson County	19.7	01-05 Robeson County	71.2
01-05 Sampson County	21.7	01-05 Sampson County	59.2
01-05 Scotland County	19.7	01-05 Scotland County	64.6
2004 Horry County	21	2004 Horry County	61
2004 South Carolina	18	2004 South Carolina	58
01-05 North Carolina	18.4	01-05 North Carolina	60.1

Female Breast Cancer		Prostate Cancer	
County	Rate	County	Rate
01-05 Bladen County	40.6	01-05 Bladen County	35.3
01-05 Brunswick County	22.6	01-05 Brunswick County	26.8
01-05 Columbus County	27.3	01-05 Columbus County	24.6
01-05 New Hanover County	31.4	01-05 New Hanover County	22.7
01-05 Pender County	23.2	01-05 Pender County	46.9
01-05 Robeson County	29.3	01-05 Robeson County	45.5
01-05 Sampson County	28.3	01-05 Sampson County	46.6
01-05 Scotland County	26.1	01-05 Scotland County	35.1
2004 Horry County	23	2004 Horry County	19
2004 South Carolina	23	2004 South Carolina	33
01-05 North Carolina	25.6	01-05 North Carolina	30.2

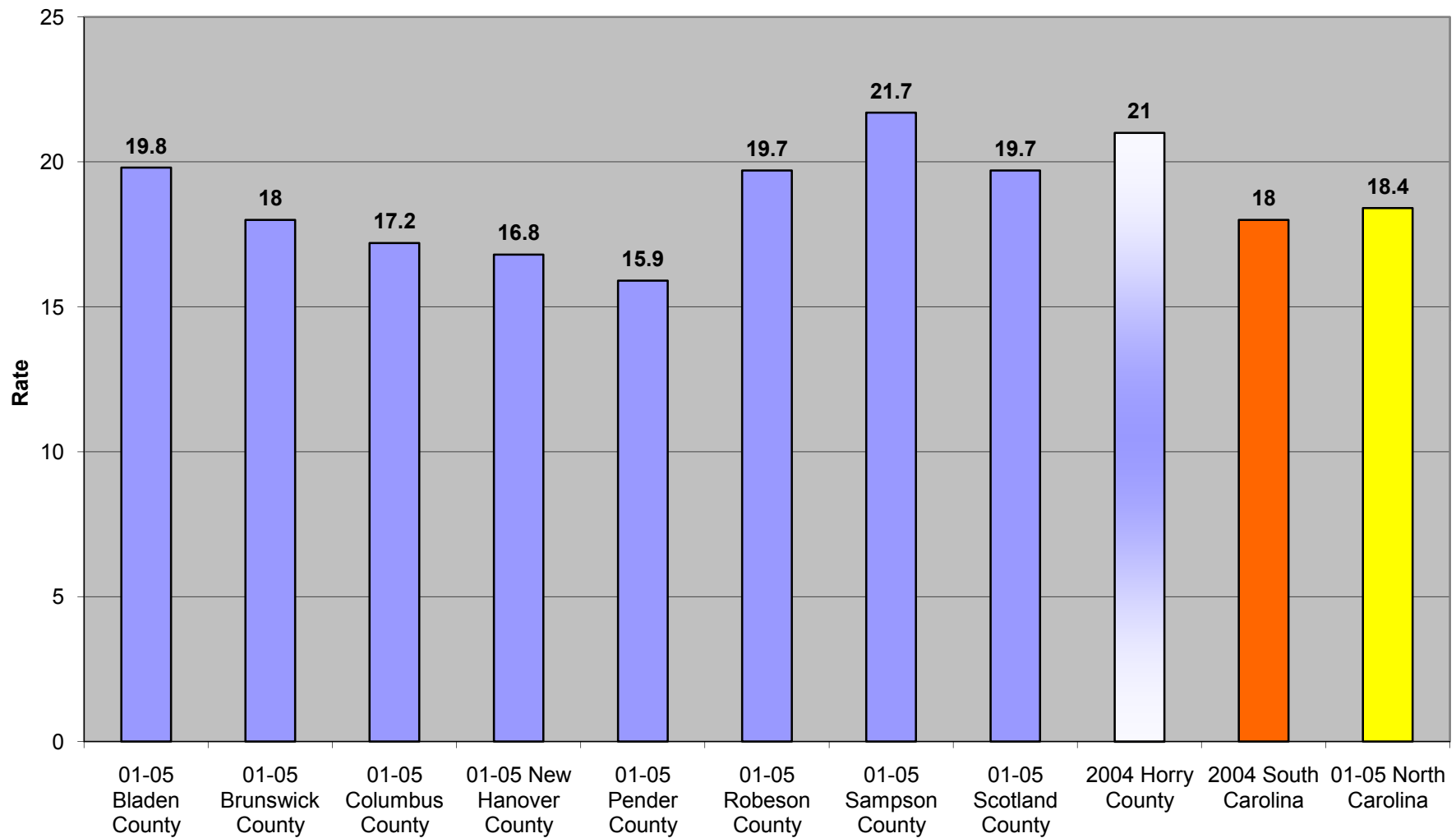
Age-Adjusted Death Rates for Female Breast Cancer for Total Population 2001-2005, per 100,000 for CCHA Counties



Age-Adjusted Death Rates for Prostate Cancer for Total Population 2001-2005, per 100,000 for CCHA Counties



**Age-Adjusted Death Rates for Colon/Rectum Cancer, Total Population 2001-2005 per 100,000
for CCHA Counties**



Age-Adjusted Death Rates for Lung/Bronchus Cancer for Total Population 2001-2005, per 100,000 for CCHA Counties

